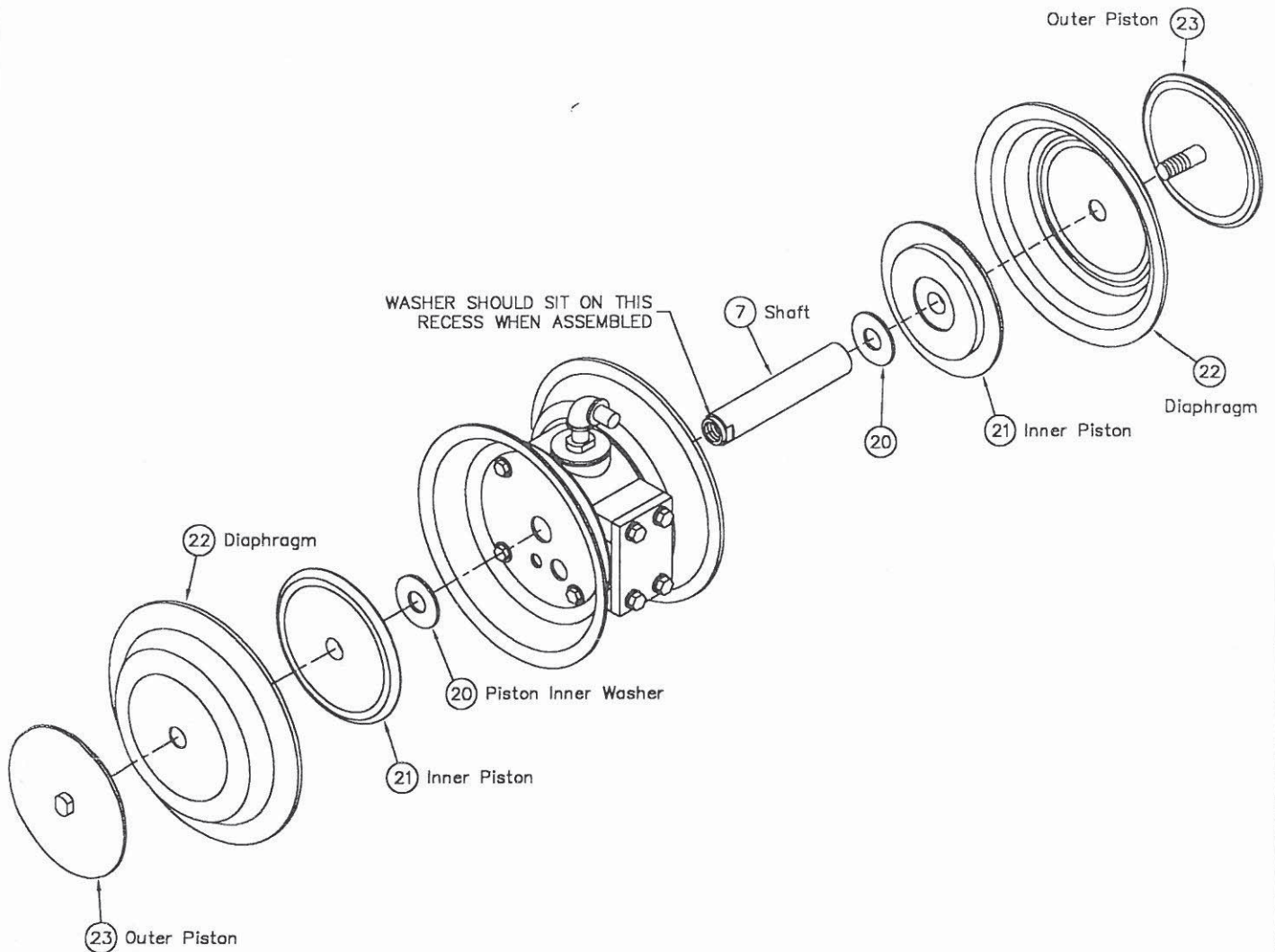




Hills List of Murzan Pump Parts

Part #	Description	Note
Assembly A	All Models	
Assembly B	All Models	
Assembly C	All Models	
Assembly D	All Models	Small or Large Chamber?
Assembly E	All Models	
210 Shaft	Standard Chamber	Length
210LC	Large Chamber	Length
214 Block Gasket (R and L, pair)	All Models	
217 Outer Piston	Standard Chamber	Only
218 Inner Piston	Standard Chamber	Only
LC217 Outer Piston large/c	Large Chamber	8 Bolt Holes Dia
LC218 Inner Piston Large/C	Large Chamber	8 Bolt Holes Dia
219 Inner Piston Washer	All Models	
220 Chamber Clamp	Standard Chamber	
220 Bolt & Rivet	All Models	
220 Clamp Handle	Standard Chamber	
LC Chamber Clamp	Large Chamber	
LC Air Chamber	Large Chamber	
226 Air Filter	All Models	
227 Muffler	All Models	
E1-3 Filter		
FG-257 Buna Diaphragm	Standard Chamber	Temp
EP-257 EPDM Diaphragm	Standard Chamber	Temp
VT-257 Viton Diaphragm	Standard Chamber	Temp
FG-457 Buna Diaphragm	Large Chamber	
EP-457 EPDM Diaphragm	Large Chamber	
VT-457 Viton Diaphragm	Large Chamber	
3x4 Flapper Complete		
4x4 Flapper Complete		
3" Flapper Only	Measures 2"	
4" Flapper only	Measures 3"	
3x4" Flapper Housing		
4x4" Flapper Housing		
3x3 PI Suction Discharge		
3x3 SLHV SBR Suction Discharge		



Pump Assembly and Part Identification

PROPRIETARY INFORMATION
 THIS DOCUMENT IS THE PROPERTY OF MURZAN, INCORPORATED. THE INFORMATION CONTAINED HEREIN IS CONFIDENTIAL AND PRESENTED TO SAID CUSTOMER FOR REVIEW OR APPROVAL UNDER NO CIRCUMSTANCES SHOULD THIS DOCUMENT BE REPRODUCED OR LOANED TO ANY THIRD PARTY WITHOUT THE WRITTEN PERMISSION OF MURZAN, INCORPORATED

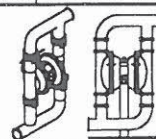
NOTES:
 1. THIS DRAWING IS FOR REFERENCE ONLY.

B	ADDED BOLTED DIAPHRAGM ASSEMBLY	16MAR2000	JUN	LU
A	ADDED NOTES	05NOV99	JUN	LU
-	NEW DRAWING	27JULY99	JUN	LU
REV	DESCRIPTION	DATE	BY	APP

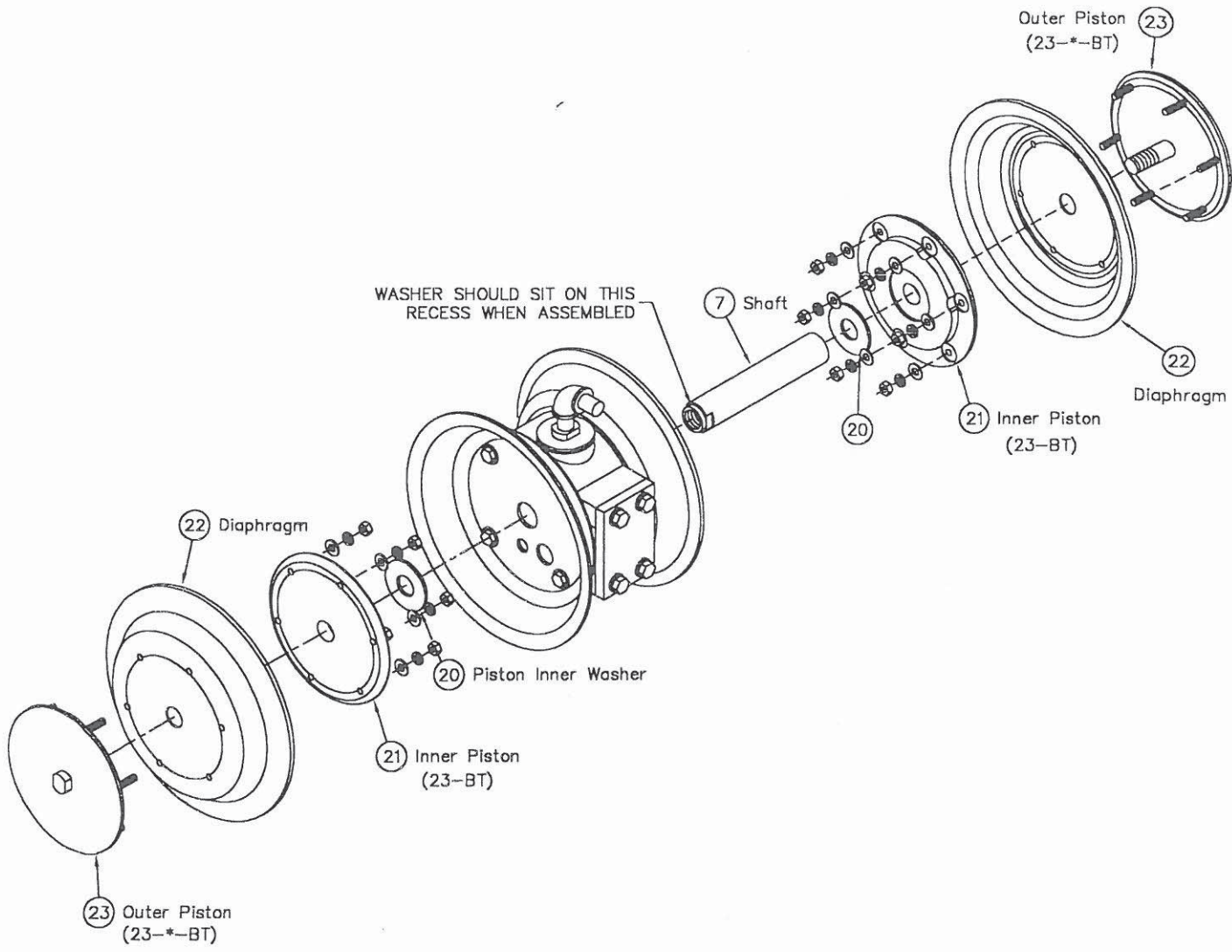
DRAWN BY: JUN CHEN
 CHECKED BY: L. URIBE
 DATE: 27JULY99
 SCALE: NONE

DESCRIPTION:
 PRODUCT LITERATURE
 PUMP ASSEMBLY AND PART ID

DRAWING No. **PLO0079B**



MURZAN INC.
 2909 LANGFORD RD. 1-700
 NORCROSS, GA. 30071 USA
 TEL: (770) 448-0583 FAX: (770) 448-0967



Pump Assembly and Part Identification

PROPRIETARY INFORMATION

THIS DOCUMENT IS THE PROPERTY OF MURZAN, INCORPORATED. THE INFORMATION CONTAINED HEREIN IS CONFIDENTIAL AND PRESENTED TO SAID CUSTOMER FOR REVIEW OR APPROVAL UNDER NO CIRCUMSTANCES SHOULD THIS DOCUMENT BE REPRODUCED OR LOANED TO ANY THIRD PARTY WITHOUT THE WRITTEN PERMISSION OF MURZAN, INCORPORATED

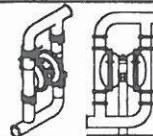
NOTES:
1. THIS DRAWING IS FOR REFERENCE ONLY.

REV	DESCRIPTION	DATE	BY	APP
B	ADDED BOLTED DIAPHRAGM ASSEMBLY	16MAR2000	JUN	LU
A	ADDED NOTES	05NOV99	JUN	LU
-	NEW DRAWING	27JULY99	JUN	LU

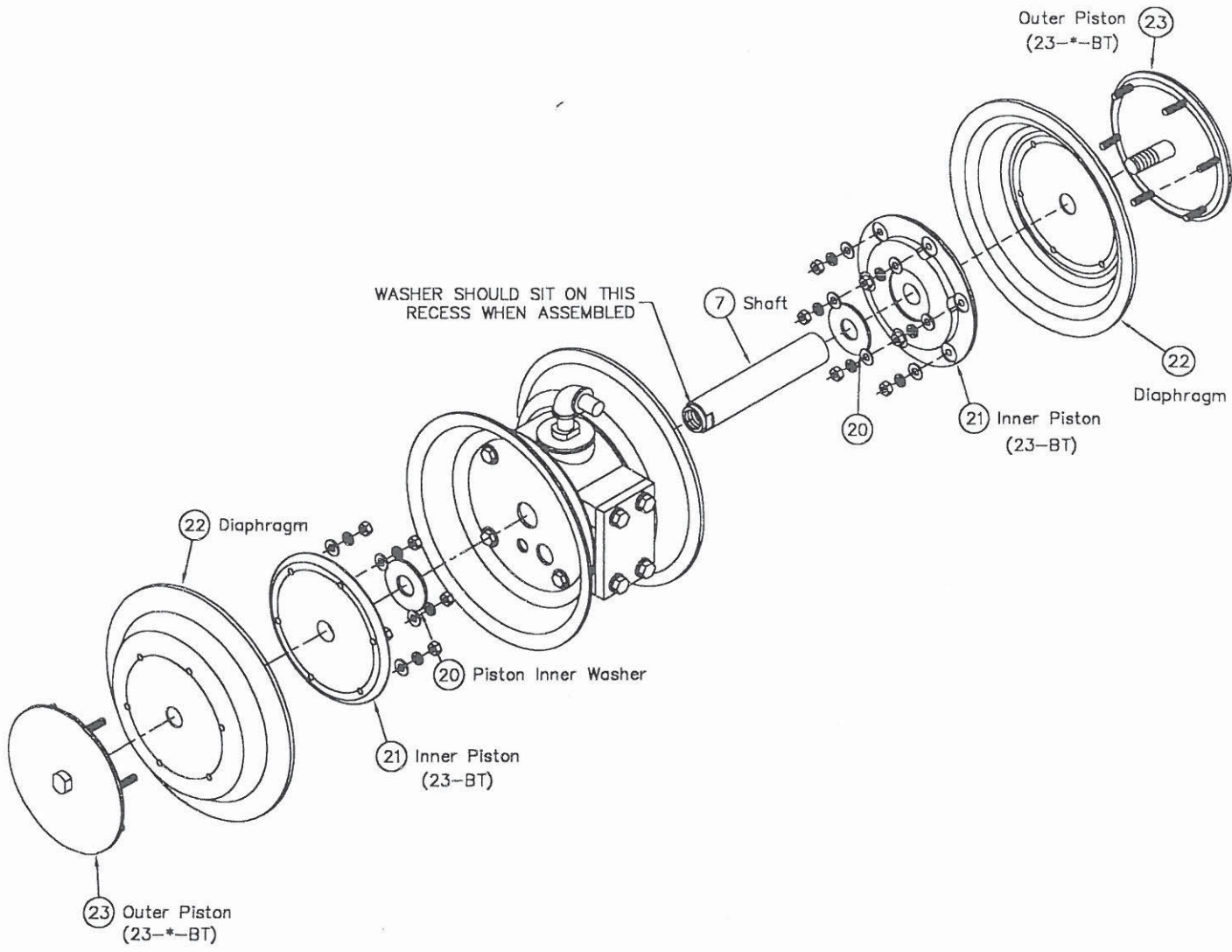
DRAWN BY: JUN CHEN
 CHECKED BY: L. URIBE
 DATE: 07MAR2000
 SCALE: NONE

DESCRIPTION:
 PRODUCT LITERATURE
 PUMP ASSEMBLY AND PART ID

DRAWING No. **PL00079B**



MURZAN INC.
 2909 LANGFORD RD. 1-700
 NORCROSS, GA. 30071 USA
 TEL: (770) 448-0583 FAX: (770) 448-0967



Pump Assembly and Part Identification

PROPRIETARY INFORMATION

THIS DOCUMENT IS THE PROPERTY OF MURZAN, INCORPORATED. THE INFORMATION CONTAINED HEREIN IS CONFIDENTIAL AND PRESENTED TO SAID CUSTOMER FOR REVIEW OR APPROVAL UNDER NO CIRCUMSTANCES SHOULD THIS DOCUMENT BE REPRODUCED OR LOANED TO ANY THIRD PARTY WITHOUT THE WRITTEN PERMISSION OF MURZAN, INCORPORATED

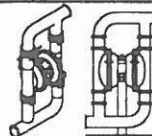
NOTES:
1. THIS DRAWING IS FOR REFERENCE ONLY.

REV	DESCRIPTION	DATE	BY	APP
B	ADDED BOLTED DIAPHRAGM ASSEMBLY	16MAR2000	JUN	LU
A	ADDED NOTES	05NOV99	JUN	LU
-	NEW DRAWING	27JULY99	JUN	LU

DRAWN BY: JUN CHEN
 CHECKED BY: L. URIBE
 DATE: 07MAR2000
 SCALE: NONE

DESCRIPTION:
 PRODUCT LITERATURE
 PUMP ASSEMBLY AND PART ID

DRAWING No.
PL00079B



MURZAN INC.
 2909 LANGFORD RD. 1-700
 NORCROSS, GA. 30071 USA
 TEL: (770) 448-0583 FAX: (770) 448-0967